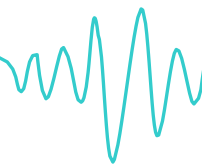


Behrens and Associates, Inc.

Environmental Noise Control



July 30, 2025

Range Resources- Appalachia, LLC

3000 Town Center Blvd

Canonsburg, PA 15317

Subject: Conner Samuel Operational Sound Level Survey

A sound level survey was performed to measure the sound levels on a residential property in McDonald, Pennsylvania. The equipment used in the sound level survey was located approximately 2,007 feet northeast of the Conner Samuel pad as shown in Attachment 1. At the time of the survey, drilling operations were occurring at the Conner Samuel Pad.

The deployed sound level meter was programmed to measure and record A-weighted overall sound levels. The instrumentation details are shown in Table 1. The measured A-weighted (LAeq) sound levels collected at the measurement location on July 15 – 18, 2025, are presented in Attachment 2 - 3. Weather data from the survey period was sourced from a nearby weather station (www.wunderground.com) named KPAMCDON21 in McDonald, Pennsylvania.

Table 1 Instrumentation Details

Location	Instrument	GPS Coordinates	Manufacturer/Model	Serial Number
Location 1	Sound Level Meter	40.33412°, -80.21376°	SVANTEK SVAN 971	61565

The flowing attachments are included:

- **Attachment 1** - Aerial image showing the location where the sound level survey was conducted.
- **Attachment 2** - Shows the measured one-hour average (Leq) overall sound levels in (dBA) at the survey location. Periods shaded in gray indicate wind speeds being above 11 miles per hour and periods shaded in blue indicate precipitation.
- **Attachment 3** - Shows the measured 15-minute average (Leq) overall sound levels in (dBA) at the survey location. Periods shaded in gray indicate wind speeds being above 11 miles per hour and periods shaded in blue indicate precipitation.

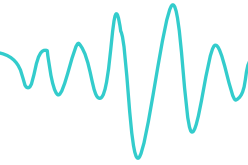
Best Regards,

Shaun Norris

Senior Acoustical Engineer

Behrens and Associates, Inc.

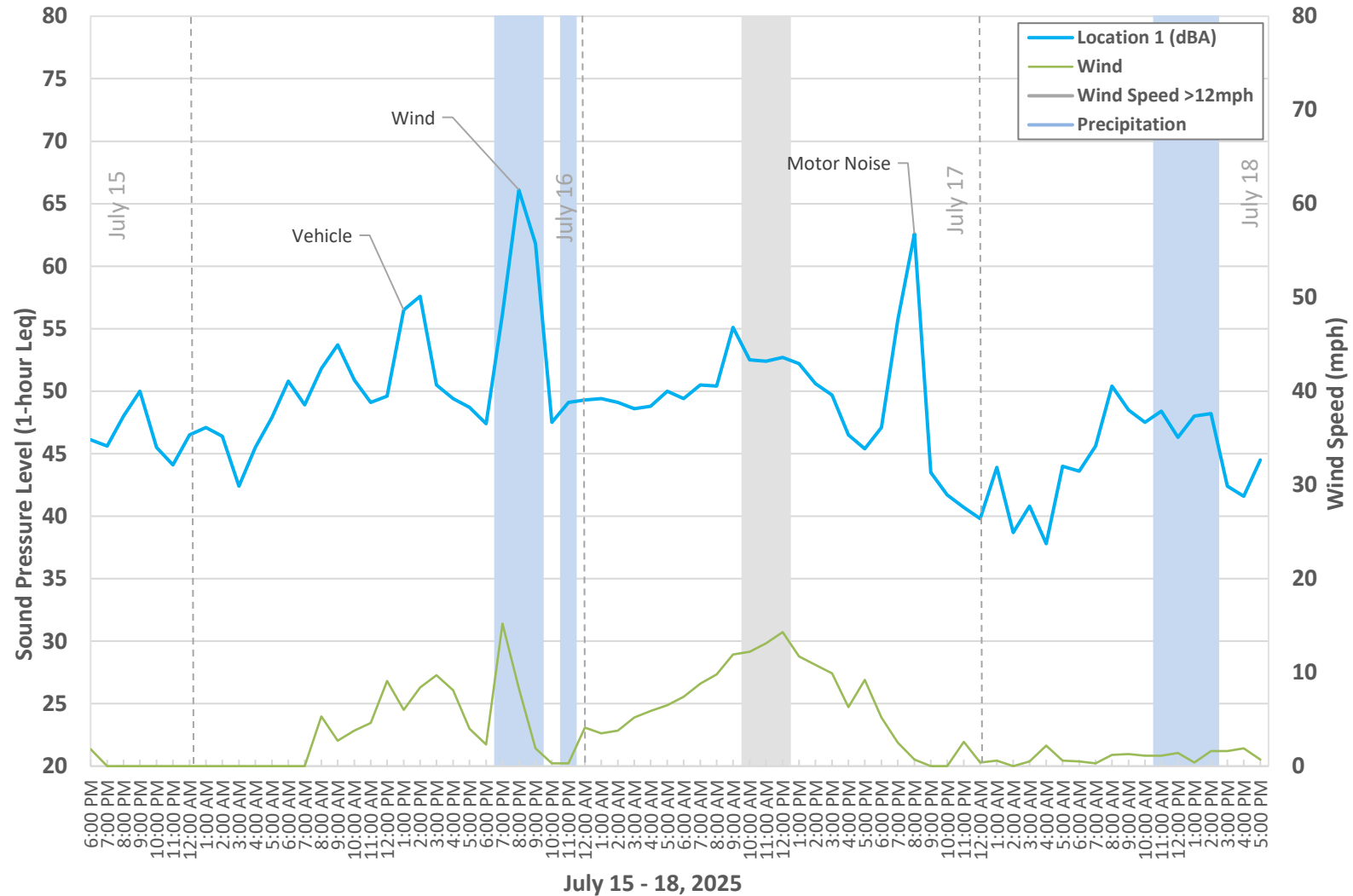
Environmental Noise Control



Attachment 1 – Conner Samuel Pad and Sound Level Survey Location

Behrens and Associates, Inc.

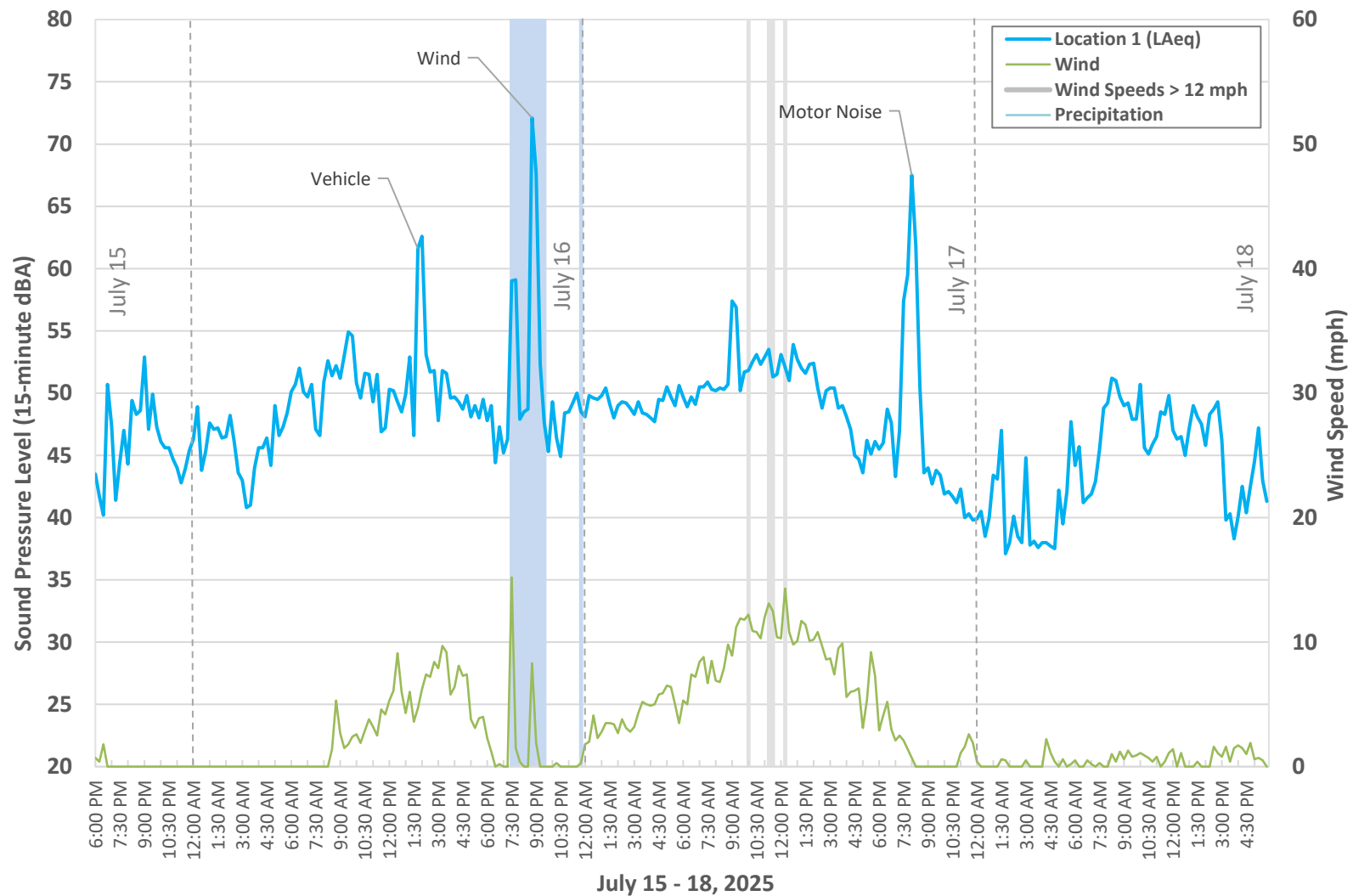
Environmental Noise Control



Attachment 2 –Measured 1-Hour Average A-Weighted Sound Levels at the Survey Location July 15 – 18, 2025

Behrens and Associates, Inc.

Environmental Noise Control



Attachment 3—Measured 15-Minute Average A-Weighted Sound Levels at the Survey Location July 15 – 18, 2025